




debra
for people whose
skin doesn't work
we do

HOLIDAY HOMES
for DEBRA members



About our holiday homes

The DEBRA holiday homes are offered at a highly subsidised rate and are for the use of individuals living with EB and their families who are members of DEBRA. The holiday homes can be used by DEBRA members not living with EB during low season.



Booking procedure

- Holiday home availability can be checked by viewing the availability calendar on the DEBRA website (www.debra.org.uk/holidayhomes) or by telephoning the Membership team on **01344 771961**.
- Bookings must be made by contacting the Membership team on the number above.
- DEBRA members living with EB are entitled to book one week's holiday in a DEBRA holiday home per year. However, DEBRA may consider applications for a further week during low season subject to availability.
- DEBRA members may book a period of less than one week (in the low season only) – in this case members will be charged on a nightly pro-rata basis. A minimum charge of £70 will apply.
- Once the booking has been taken a provisional booking letter, booking form and a copy of DEBRA's terms and conditions of booking will be sent requesting payment of £50 deposit. The deposit and the completed booking form must be returned within 14 days of the date given on the provisional booking letter. The booking is not secured until this has been received by DEBRA. Once the booking form and the deposit payment have been received a letter confirming the booking will be sent. If this is not received within 14 days of the date given on the provisional booking letter DEBRA reserves the right to cancel the booking and release the date to other members.
- The outstanding amount must be paid in full no later than eight weeks prior to the date of the holiday – an email will be sent ten weeks prior to the holiday to remind members that payment is due. Once full payment has been received further details on how to check in to the holiday home will be sent.
- If a booking is made less than eight weeks prior to the holiday date full payment will be taken at the time of booking.



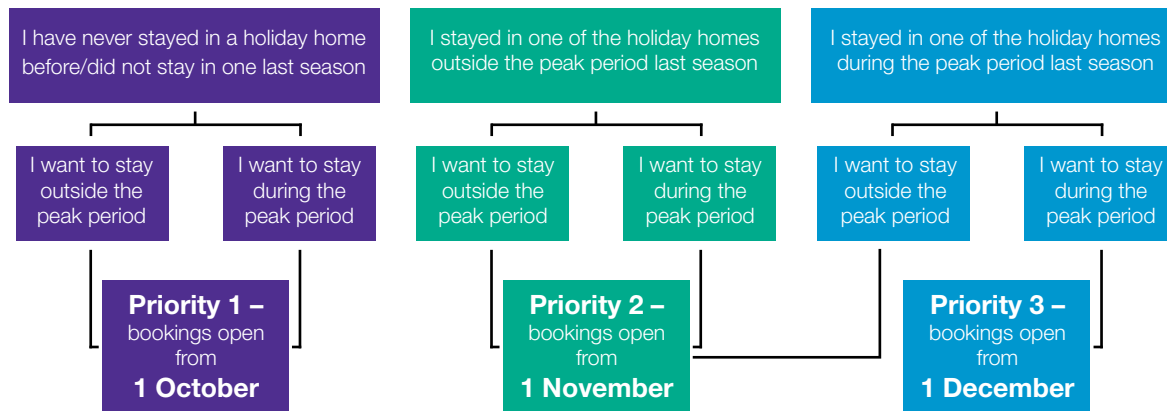
A complete copy of the policy and procedure for booking a DEBRA holiday home can be found on the DEBRA website at www.debra.org.uk/holidayhomes.



Priority booking dates

When can I book to stay in a DEBRA holiday home?

Due to the high demand for the DEBRA holiday homes, there is a priority booking system in place. Please use the following diagram to find the booking date applicable to you.



Booking requests received before the relevant priority booking date will not be accepted. All booking requests will be dealt with on a first come first served basis.

If a priority booking date falls on a bank holiday or public holiday, or a Saturday or Sunday, the next working day will be considered the priority booking date.

Smoking

DEBRA operates a strict no smoking policy in all the holiday homes.

Dogs

Dogs are allowed in certain holiday homes at DEBRA's discretion – they must be included on the booking form. Please enquire through the Membership team at the time of booking.





BRYNTEG HOLIDAY HOME PARK, NORTH WALES

LLANRUG, NEAR CAERNARFON, GWYNEDD LL55 4RF

Tel: 01286 873100 www.brynteg.co.uk

Price: £200 per week (all year)

LOCATION

Based in North Wales near the Snowdonia mountains, the Llyn Peninsula, and the Isle of Anglesey's beautiful beaches. Brynteg Holiday Home Park is the ideal base to explore the best North Wales has to offer.

- Snowdonia Mountain Railway
- Powerboat rides from Caernarfon along the Menai Straits
- Steam trains on the Welsh Highland Railway
- Greenwood Forest Park
- Plas Menai offers courses in dinghy sailing, windsurfing, coasteering, powerboating and lots more
- Visit the historic castles of Caernarfon, Beaumaris, Conwy, Criccieth and Harlech
- Nearest train station is Caernarfon – 5 miles away
- Nearest beach is Benllech Bay – 2.5 miles away

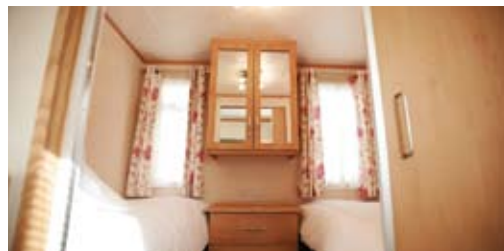
BRYNTEG FACILITIES

- Free use of the facilities, including many of the Go Active leisure activities*
- Outdoor adventure playground and indoor soft play area
- Spa and beauty treatment rooms
- Free Wifi
- State-of-the-art gym, indoor leisure complex and tennis and badminton courts
- Par 3 golf course
- Country club and bistro
- And much more!

THE HOLIDAY HOME (SLEEPS 6/7)

- 1 double bedroom with ensuite shower room
- 1 twin bedroom
- 1 single bedroom
- 1 double bed settee in lounge
- Bathroom with bath and shower attachment
- Ramp access, heating, TV, microwave oven, fridge, washing machine, decking area and parking for one car
- All bedding (including sheets and covers) is provided for all beds except for the bed settee – please bring your own bedding if you wish to use this
- Please also bring your own towels and tea towels

*** Many of the Go Active leisure activities are free to DEBRA members, although there may be some that carry a charge. Activities can be booked online 2 – 3 weeks in advance. DEBRA will provide the information needed to book these activities before your holiday.**



WEYMOUTH RED 36, WATERSIDE HOLIDAY PARK AND SPA

BOWLEAZE COVE, WEYMOUTH, DORSET DT3 6PP

Tel: 01305 833103 www.watersideholidaygroup.co.uk/waterside

Price: £150 per week – March, April, May and October (low season)
£200 per week – June through to September (high season)

LOCATION

Weymouth Waterside Holiday Park is a family holiday park situated just yards from the beach and 1.5 miles from the centre of Weymouth. The town boasts many visitor attractions typical of a popular seaside resort, including the picturesque harbour. Weymouth itself has a long sandy beach, reputedly one of the cleanest in Britain.

- Monkey World
- Sea Life Adventure Park
- Longleat Safari Park
- Tank Museum
- Swanage Railway
- Abbotsbury Children's Farm
- Lulworth Cove and Durdle Door
- Dinosaur Museum
- Weymouth Tower

WATERSIDE PARK FACILITIES

- Heated indoor fun pools with slides
- Children's entertainment and soft play area
- Baby equipment and bed linen hire available
- Spa and sauna
- Outdoor swimming pools including a children's heated splash pool
- Launderette
- Two licensed club rooms with entertainment
- Self service shop
- Local bus service into Weymouth (wheelchair accessible)
- Outdoor gym equipment
- Sports bar
- State-of-the-art gym
- Wifi (charges apply)

THE HOLIDAY HOME (SLEEPS 6)

- 2 twin bedrooms (the larger bedroom has an over bed grab bar)
- Wetroom with roll-in shower
- One double fold out bed in lounge
- Ramp access, heating, TV, microwave oven, fridge/freezer, decking area and parking for one car
- Pillows and duvets are supplied but guests must bring their own sheets and covers, as well as their own towels and tea towels

***Please note that a daily or weekly charge applies for use of the leisure complex. This includes the swimming pools, gym and sauna.**



WEYMOUTH ORANGE 65, WATERSIDE HOLIDAY PARK AND SPA

BOWLEAZE COVE, WEYMOUTH, DORSET DT3 6PP

Tel: 01305 833103 www.watersideholidaygroup.co.uk/waterside

Price: £150 per week – March, April, May and October (low season)
£200 per week – June through to September (high season)

LOCATION

Weymouth Waterside Holiday Park is a family holiday park situated just yards from the beach and 1.5 miles from the centre of Weymouth. The town boasts many visitor attractions typical of a popular seaside resort, including the picturesque harbour. Weymouth itself has a long sandy beach, reputedly one of the cleanest in Britain.

- Monkey World
- Sea Life Adventure Park
- Longleat Safari Park
- Tank Museum
- Swanage Railway
- Abbotsbury Children's Farm
- Lulworth Cove and Durdle Door
- Dinosaur Museum
- Poole Pottery

WATERSIDE PARK FACILITIES

- Heated indoor fun pools with slides
- Children's entertainment and soft play area
- Baby equipment and bed linen hire available
- Spa and sauna
- Outdoor swimming pools including a children's heated splash pool
- Launderette
- Two licensed club rooms with entertainment
- Self service shop
- Local bus service into Weymouth (wheelchair accessible)
- Outdoor gym equipment
- Sports bar
- State-of-the-art gym
- Wifi (charges apply)

THE HOLIDAY HOME (SLEEPS 6)

- 1 double bedroom
- 1 twin bedroom
- Bath and separate shower cubicle
- One double fold out bed in lounge
- Ramp access, heating, TV, microwave oven, fridge/freezer, decking area and parking for one car
- Pillows and duvets are supplied but guests must bring their own sheets and covers, as well as their own towels and tea towels

***Please note that a daily or weekly charge applies for use of the leisure complex. This includes the swimming pools, gym and sauna.**



ROCKLEY PARK HOLIDAY PARK

NAPIER ROAD, POOLE, DORSET BH15 4LZ

Tel: 01202 680691 www.haven.com/parks/dorset/rockley-park

Price: £150 per week – March, April, May and October (low season)
£200 per week – June through to September (high season)

LOCATION

Rockley Park has stunning views overlooking Poole harbour. Set in Thomas Hardy country, with stunning cliff top scenery, golden sands, and the Park's Nature Reserve, Rockley Park is an ideal base. There are numerous attractions within easy reach of Poole including:

- Monkey World
- Corfe Castle
- Tank Museum
- Poole Pottery
- Abbotsbury Subtropical Gardens
- Bournemouth Oceanarium
- Swanage Railway
- Adventure Wonderland

ROCKLEY PARK FACILITIES

- Luxury spa complex
- Watersports facilities
- Nature reserve
- Heated indoor pool and outdoor pool with children's paddling area
- Evening entertainment
- Moderately steep sloping access to a small sandy beach and beach club
- Convenience store, off licence and launderette
- All weather multi-sports court
- Kids' clubs, playgrounds and fun activity programme
- Access to the owners' club, 'Tides'

THE HOLIDAY HOME (SLEEPS 6)

- 1 double bedroom with over bed grab bar
- 1 twin room
- Wetroom with roll-in shower
- One double fold out bed in lounge
- Ramp access, heating, TV, microwave oven, fridge/freezer, parking for one car
- Pillows and duvets are supplied but guests must bring their own sheets and covers, as well as their own towels and tea towels. Please note: The double bedroom requires king size bedding.

If you have any feedback on your stay at any of the DEBRA holiday homes or suggestions for new sites for holiday homes please get in touch:

DEBRA
13 Wellington Business Park
Dukes Ride
Crowthorne
Berkshire
RG45 6LS

membership@debra.org.uk

01344 771961

Thank you to all our sponsors who have helped cover the costs of purchasing and maintaining the DEBRA holiday homes.

If you or your company would like to sponsor a DEBRA holiday home please contact us.

DEBRA is the national charity that supports individuals and families affected by Epidermolysis Bullosa (EB) – a painful genetic skin blistering condition.

www.debra.org.uk

 : /DEBRACHarity

 : @CharityDEBRA

A charity registered in England and Wales (1084958) and Scotland (SC039654)
A company limited by guarantee registered in England and Wales (4118259).

